

New Castle County Chamber of Commerce

# Annual Dinner

*Stronger Together. Healthy Communities  
and Growing Economies.*

*Presented by*  **ChristianaCare**



# They'd Do Anything for You

Do *this* for them.

Your family needs you at your best. Make sure you're keeping up with your regular healthcare screenings and preventive care.

At ChristianaCare, we can help you:

- Make healthier choices
- Understand your risks
- Get the screenings you need

Give your loved ones the gift of peace of mind. Take some time to focus on yourself and get checked out.

➤ [ChristianaCare.org/BeHealthy](http://ChristianaCare.org/BeHealthy)



# AGENDA

## NATIONAL ANTHEM

**Kerriann Otaño**  
*OperaDelaware*

## REFLECTION

**The Honorable Darius Brown**  
*State Senator*

## WELCOME REMARKS

**Yvonne Deadwyler**  
*New Castle County Chamber of Commerce, President & CEO*

## COUNTY REMARKS

**The Honorable Marcus Henry**  
*New Castle County Executive*

## SENATOR REMARKS

**The Honorable Lisa Blunt Rochester**  
*U.S. Senator for Delaware*

## DINNER IS SERVED

## KEYNOTE ADDRESS

Keynote Speaker  
**Dr. Janice Nevin**  
*ChristianaCare, President & CEO*

## BOARD CHAIR REMARKS

**Pamela Scott**  
Saul Ewing, Partner  
*Chamber Board of Directors, Chair*

## AWARDS CEREMONY

Economic Impact Award  
**Chemours**  
*Represented by: Denise Dignam, President & CEO*

Community Service Award  
**Food Bank of Delaware**  
*Represented by: Cathy Kanefsky, President & CEO*

Lifetime Achievement Award  
**Michael Hare**  
*Buccini Pollin Group*

## CLOSING REMARKS

**Yvonne Deadwyler**  
*New Castle County Chamber of Commerce, President & CEO*



1440 || FILM CO.

THERE ARE ONE THOUSAND FOUR-HUNDRED AND FORTY MINUTES IN A DAY. **MAKE THEM COUNT.**

[WWW.1440FILMCO.COM](http://WWW.1440FILMCO.COM)



# ANNUAL DINNER COMMITTEE

**Joe Fitzgerald**

Committee Chair

*Fitzgerald Consulting*

**Yvonne Deadwyler**

*New Castle County Chamber of Commerce*

**Vere Archibald**

*DuPont*

**Pamela Scott**

*Saul Ewing LLP*

**John Allen**

*Allen Insurance Group*

**Rick Deadwyler**

*Corteva Agriscience*

**Kim Gomes**

*ByrdGomes*

**Ken Grant**

*Convergence Public Affairs*

**Tyrone Jones**

*Bloom Energy*

**Yvette Santiago**

*Nemours Children's Health*



**NOTHING** *bundt* **CAKES™**

**WILMINGTON-BRANDYWINE** - 5601 Concord Pike, Wilmington, DE 19803 - (302) 268-8788

**CHRISTIANA-NEWARK** - 1125 Churchmans Road, Newark, DE 19713 - (302) 297-4045

**MIDDLETOWN-DE** - 810 Kohl Avenue, Middletown, DE 19709 - (302) 232-8020

**SALISBURY-MD** - 2717 N Salisbury Blvd, Salisbury, MD 21801 - (410) 642-5155

NEW CASTLE COUNTY CHAMBER OF COMMERCE

# TEAM

**Yvonne Deadwyler**

*President and Chief Executive Officer*



**Beth Fisher**

*Vice President of Benefits*



**Danielle Murabito**

*Sr. Director of Strategy & Marketing*



**Emma Odren**

*Director of Economic Development and Strategic Partnerships*



**Emily Justison**

*Director of Communications and Public Relations*



**Ken Evans**

*Director of Membership Development*



**Cathy Scott Holloway**

*Director of Member Engagement*



**Jeanne Kress**

*Senior Director of Membership Development*



**Nicole Crostic**

*Senior Executive Assistant*



**Jordan Spencer**

*Manager of Strategic Events and Member Engagement*



**Joe Fitzgerald**, *Government Affairs*

**Sally Forrest**, *Administrative Coordinator*

**Debbie Watts**, *Support Services Coordinator*

# BOARD OF DIRECTORS

**Pamela Scott**  
Board Chair  
*Saul Ewing LLP*

**Vere Archibald**  
Board Vice-Chair  
*DuPont*

**Douglas P. Azar, MHA**  
*ChristianaCare*

**Matthew Barnes**  
*TD Bank*

**Marcus Beal**  
*Delmarva Power*

**Jeff Casey**  
*JPMorgan Chase & Co.*

**Irene Champan-Hawkins,  
Ed.D.**  
*Delaware State University*

**Jennifer Cohan**  
*Associated Builders & Contractors DE*

**John Cohill**  
*Comcast Cable of New Castle County*

**Kelly Firment**  
*Bank of America Delaware*

**Logan Herring**  
*The WRK Group*

**Randi Licciardello**  
*Delaware City Refining Company*

**Jose Lopez**  
*La Tolteca Mexican  
Restaurant*

**Mac Macleod**  
*CarVertise*

**Jeffrey Martino**  
*Wilmington University*

**Katie McEvoy**  
*AT&T Services, Inc.*

**Alexandra Parkowski**  
*Aloysius Butler & Clark*

**Archie Payne**  
*VISA Inc.*

**Christine Schiltz**  
*Parkowski, Guerke & S  
wayze P.A.*

**Barry Sharpe**  
*Bloom Energy*

**Greg Smith**  
**Chemours**

**Pablo Velazquez**  
*M&T Bank*

**Eugene Young Jr.**  
*Enstructure LLC*

# KEYNOTE SPEAKER



**Dr. Janice Nevin**  
President & CEO  
*ChristianaCare*

## ABOUT DR. NEVIN

A visionary and collaborative health care leader, Janice E. Nevin, M.D., MPH, has served as president and CEO of ChristianaCare since 2014, leading its transformation from a health care system to a system that truly impacts health. She is nationally recognized as a pioneer and thought leader in value-based care and population health, and for her assertion that truly great health care is built on the values of love and excellence. These values are exemplified in her commitment to making high-quality care more accessible and affordable for everyone in the communities that ChristianaCare serves.

READ MORE





SOLVE  
ON.

Incyte is proud  
to sponsor the  
New Castle County  
Chamber of Commerce  
Annual Dinner.

LEARN MORE AT  
[incyte.com](http://incyte.com)



# Delivering Trusted Chemistry for a Better World.

The Chemours Discovery Hub (CDH) is a state-of-the-art research and development facility in Newark, Delaware. From more efficient cooling solutions for data centers to the next generation of lithium-ion batteries for higher-performing EVs, Chemours Discovery Hub is advancing innovations that will support a more sustainable future.



# ECONOMIC IMPACT AWARD



## Chemours

*Represented by:  
Denise Dignam,  
President & CEO*

READ MORE



## WHY WE HONOR CHEMOURS

Chemours is recognized for its meaningful impact across our state—supporting hundreds of jobs, maintaining a strong presence in Wilmington, and strengthening our regional economy. Its investment in the Discovery Hub at the University of Delaware’s STAR Campus reflects a commitment to innovation, while its partnership with EastSide Charter School to develop a new STEM Hub is helping prepare students for high-paying technical careers; together, this work by Chemours embodies the spirit of the Economic Impact Award.

## ABOUT THE AWARD

To recognize a business or leader’s contribution and impact toward economic growth, as well as their presence here in Wilmington, New Castle County, and the state’s economic ecosystem.

## PAST HONOREES

2025	Incyte
2024	Charlie McDowell
2023	JPMorgan Chase & Co.

---

PARKOWSKI

---

GUERKE &

---

SWAYZE

---

**Parkowski, Guerke & Swayze**  
congratulates the  
**New Castle County Chamber of Commerce**  
on its  
**104th Annual Dinner**

Saint Joseph's University congratulates

## **Michael J. Hare '83**

as the recipient of this year's  
**Lifetime Achievement Award.**

We proudly join in celebrating  
this well deserved honor and  
thank Mike for many years of  
leadership and partnership.

 **SAINT JOSEPH'S  
UNIVERSITY**



# LIFETIME ACHIEVEMENT AWARD



**Michael Hare**

*Buccini Pollin Group*

READ MORE



## WHY WE HONOR MIKE HARE

In recognition of his lasting impact, we honor Mike for leading transformative development initiatives that have strengthened our region's economic landscape through his work at the The Buccini/Pollin Group. Earlier in his career, his leadership with the Riverfront Development Corporation was instrumental in the \$1 billion revitalization of the Wilmington Riverfront. His service on boards such as the Boys & Girls Clubs of Delaware and the Delaware Technical & Community College reflects a deep commitment to our community—together embodying the spirit of the Lifetime Achievement Award.

## ABOUT THE AWARD

A leader who has distinguished themselves in their career and has made our county a better place to live, work and invest.

## PAST HONOREES

**2025** The Legacy of Ted Blunt  
**2024** U.S. Senator Tom Carper  
**2023** Beatrice “Bebe” Coker  
**2022** Mark Stellini  
**2021** Bob Byrd  
**2020** Kathleen Matt, Ph.D.

# VEOLIA

## IS PROUD TO SUPPORT THE

### *New Castle County Chamber*

---

For more than 170 years, Veolia has been by the side of cities, industries and communities to help them manage, recycle and protect their critical resources in the face of environmental challenges.

[www.veolianothamerica.com](http://www.veolianothamerica.com)



 **VEOLIA**

# COMMUNITY SERVICE AWARD



## Food Bank of Delaware

*Represented by: Cathy Kanefsky, President & CEO*

READ MORE



## WHY WE HONOR FOOD BANK

The Food Bank of Delaware is being honored with the Community Service Award for its extraordinary reach and impact. From supporting families in times of crisis to expanding programs, facilities, and volunteer engagement, the organization continues to strengthen communities across the state. In Fiscal Year 2025 alone, it distributed nearly 17.3 million pounds of food—equivalent to 20.6 million meals—marking the most impactful year in its 44-year history. Its unwavering commitment to serving our neighbors truly embodies the spirit of this award.

## ABOUT THE AWARD

An individual or organization who has made extraordinary contributions of their time, talent and resources and dedication to bettering our community.

## PAST HONOREES

<b>2025</b>	Raye Jones Avery
<b>2024</b>	Ivan Thomas
<b>2023</b>	Maria Matos
<b>2022</b>	Dr. Joan Coker



# WE ARE HONORED.

We are humbled to receive the Community Service Award and extend our sincere thanks to the New Castle County Chamber of Commerce for this recognition. Our work is not possible without the unwavering support of our community, whose generosity allows us to serve our neighbors with dignity and respect.



**GET INVOLVED**  
[www.fbd.org](http://www.fbd.org)

**STRONGER  
TOGETHER**

---

**RICHARDS  
LAYTON &  
FINGER**

We proudly support the

**NCCCC 2026 Annual Dinner**

and congratulate this year's honorees

**FOOD BANK OF DELAWARE**

*Community Service Award*

**THE CHEMOURS COMPANY**

*Economic Impact Award*

**MICHAEL J. HARE**

Executive VP of Development, Buccini Pollin Group

*Lifetime Achievement Award*



BANKING | BUSINESS LAW | COMMERCIAL REAL ESTATE

CORPORATE TRUST | EMPLOYMENT

ENVIRONMENTAL | INTELLECTUAL PROPERTY | LITIGATION

LLCS & PARTNERSHIPS | TAX | TRUSTS & ESTATES

Benefits Connection

brokered by

**AI**  
Allen Insurance  
GROUP



# Fortune 500 Benefits. Scaled for Delaware.

The Benefits Connection is proud to be a part of the NCCCC and empower local businesses with elite health, HR, and payroll solutions

Stop renewing. Start upgrading.



[www.alleninsurance.com/benefit](http://www.alleninsurance.com/benefit)

OPERA DELAWARE

GIORDANO'S

# ANDREA, CHÉNIER

COMPANY PREMIERE

MAY 10-13-15  
THE GRAND  
WILMINGTON



HEADS WILL ROLL  
THIS MAY  
AT THE GRAND!

VIVA  
LA  
MOR  
TE  
INSIEM!

**SPECIAL DISCOUNT!**  
**USE CODE CHAMBER AT CHECKOUT AND SAVE**  
**20% ON TICKETS FOR ANDREA CHÉNIER!**

Building stronger communities,

*together.*



Proud to support the New Castle County Chamber of Commerce

## Fulton Bank

800.FULTON.4 • [fultonbank.com](http://fultonbank.com)

Fulton Bank, N.A. Member FDIC.

## Delivering Energy That Makes Life Better.

For over 165 years, Chesapeake Utilities has provided affordable energy, helping communities save on costs and grow economically. Our commitment to a lower-carbon future drives investments in energy projects, reducing emissions from our operations and customers.

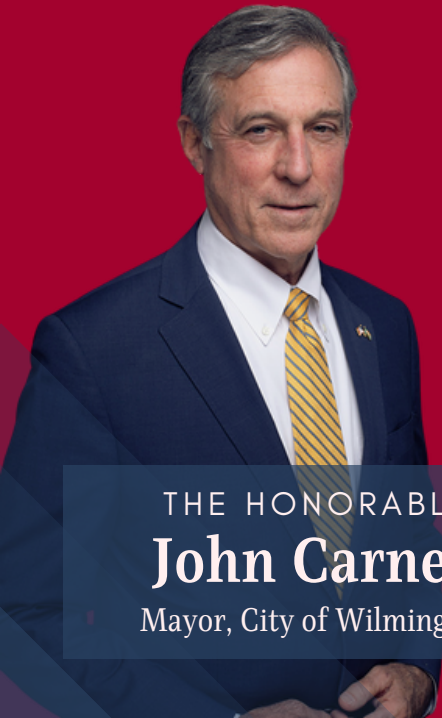
Learn more at [chpkgas.com](http://chpkgas.com).





# Mayoral Luncheon

Mayoral forum for the business community.



---

 CHASE CENTER

 June 12 at 11:00 a.m.

---

 **REGISTER NOW**

THE HONORABLE  
**John Carney**  
Mayor, City of Wilmington



Wilmington University proudly supports the  
**New Castle County Chamber of Commerce**  
**104th Annual Dinner**

We are all stronger together in healthy  
communities and growing economies.



**WILMINGTON**  
UNIVERSITY™

**wilmu.edu**



# When your business thrives, our community thrives.

## ■ Checking and Savings Solutions

- Business Checking Accounts
- Business Savings and
- Money Market Accounts
- Online Banking and the TD App

## ■ Lending Solutions

- Loans and Lines of Credit
- SBA Loans
- TD Business Solutions Credit Card

## ■ Payment Solutions

- Tap to Pay for iPhone
- TD Merchant Solutions
- TD Online Accounting
- Zelle®

Zelle® and the Zelle® related marks are wholly owned by Early Warning Services, LLC and are used herein under license. TD Bank, N.A., Member FDIC ©2026 TD Bank, N.A. and/or its affiliates. All rights reserved. The TD logo and other TD trademarks are owned by The Toronto-Dominion Bank or its affiliates and are used under license. Loans subject to credit approval. | Terms and Conditions may apply. Equal Housing Lender 🏠 Visit your nearest TD location for terms and conditions of all products referenced above.



To learn more, scan our  
QR code or visit  
[td.com/smallbusiness](https://td.com/smallbusiness)

# Congratulations to Mike Hare from Boys & Girls Clubs of Delaware!



**BOYS & GIRLS CLUBS  
OF DELAWARE**

## SPRING INTO SAVINGS!

*Cut Your Credit Card Fees This Season*

WITH

**METRO** ✨  
PAYMENT TECHNOLOGIES

- ✓ Eliminate Credit Card Processing Fees
- ✓ Keep More of Every Sale (Up to 100%)
- ✓ Simple Setup - No Disruption to Your Business

**Schedule a Free Savings Analysis Today**

**20+** Years in  
Business



Call or Text: (302) 540-8442

✉ [jeff@metropaytech.com](mailto:jeff@metropaytech.com)

🌐 [metropaytech.com](http://metropaytech.com)



# A legacy of leadership

We're honored to support the NCCCC and celebrate the leaders who inspire, impact, and connect our community to a brighter future, together.

[attconnects.com/Delaware](https://attconnects.com/Delaware)



# Upcoming Member Events

## Monthly

### Business After Hours



Join us for our monthly networking Business After Hours to meet other members while learning how to make the most of your Chamber membership. Business After Hours are held the second Thursday of the month. Members attend for free.

[REGISTER NOW](#)

## Quarterly

### Open House



Whether you are a new member, current member, or future member, we encourage you to attend our quarterly free new member open house networking events to get to know our staff and how we can benefit your business.

[REGISTER NOW](#)

## Monthly

### Awesome Resource Group



This group fosters meaningful connections, encourages insight-sharing, and creates opportunities through mutual recommendations and introductions. Be part of a collaborative environment that helps you grow and succeed.

[REGISTER NOW](#)



delmarva  
power™

AN EXELON COMPANY

## Empowering Growth, One Business at a Time

Local businesses fuel our economy's engine. Our partnership with the New Castle County Chamber of Commerce ignites powerful economic growth where we live and work, expanding job opportunities and helping local businesses to thrive.

[delmarva.com](http://delmarva.com)

© Delmarva Power & Light Company, 2026

# When we give back, our community leaps forward.

WSFS Bank sees every chance to support a local nonprofit as an opportunity to grow and enrich our Community. We're honored to support the positive impact made by the **New Castle County Chamber of Commerce 104th Annual Dinner**.





# YOUR SAFETY IS OUR PRIORITY

AAA has been your tireless road safety advocate since 1902.

From One Century-old Membership Organization to Another  
AAA is proud to support the  
New Castle County Chamber of Commerce  
2026 Annual Dinner

Through over 120 years of service, AAA has been instrumental in pushing for legislation and training to improve roadway safety for everyone. AAA is happy to have the New Castle County Chamber of Commerce as an ally in Delaware.

# Get to Know Gawthrop



Gawthrop Greenwood, PC  
*Attorneys at Law*

## In Greenville

- Business & Corporate Law
- Family Law
- Litigation
- Real Estate & Land Use
- Trusts & Estates



**P. Kristen Bennett**



**Ann L. Martino Frazier**



**Carl W. Heckert**



**Mary Ann Plankinton**

**M&T Bank is proud  
to support New  
Castle County  
Chamber of  
Commerce 104th  
Annual Dinner.**

**M&T** Bank



“Great updates from  
the top organizations.”

2025 Attendee



“Very impressive event.”

2025 Attendee



New Castle County  
**STATE OF THE  
COUNTY**

 **REGISTER NOW**



15 JULY, 2026



9 AM - 12 PM



UNIVERSITY OF DELAWARE  
CLAYTON HALL

**DRBA** DELAWARE RIVER  
& BAY AUTHORITY  
CONNECTIONS THAT MOVE YOU

*Proud Sponsor*

*and Member*

*of the*

*New Castle County  
Chamber of Commerce*

## Board of Commissioners

M. Earl Ransome  
Chairman

Heather K. Baldini  
Debra S. Behnke  
James P. Mehaffey  
Sheila McCann  
Shirley R. Wilson



Samuel E. Lathem  
Vice Chairman

Crystal L. Carey  
James L. Collins  
Veronica O. Faust  
Michael Houghton  
Michael Ratchford

Joel V. Coppadge Executive Director

Ceil Smith Deputy Executive Director



WOMEN'S  
LEADERSHIP  
CONFERENCE  
NEW CASTLE COUNTY CHAMBER OF COMMERCE

# POW

POWER OF WOMEN

NOVEMBER 19, 2026

SAVE THE  
DATE

 REGISTER NOW



# Nationally Recognized Pediatric Care

Our hospitals are ranked by *U.S. News & World Report* as among the best in the nation in multispecialties.



Delaware



Florida



Well Beyond Medicine

# Local expertise, Local decision making.

With over 10,000 local employees and twelve branches, Chase is committed to helping small and mid-sized businesses across Delaware achieve their goals.

For insights that will help take your business to the next level, visit [chase.com/business](http://chase.com/business) and [jpmorgan.com/commercial-banking](http://jpmorgan.com/commercial-banking).

Tim Boyle  
Vice President, Commercial Banking  
(215) 640-3562  
[timothy.w.boyle@chase.com](mailto:timothy.w.boyle@chase.com)

Jeff Casey  
Vice President, Higher Education,  
Healthcare and NFP Treasury Banking  
(302) 415-9789  
[jeffrey.casey@jpmorgan.com](mailto:jeffrey.casey@jpmorgan.com)

©2026 JPMorgan Chase & Co.



JPMorganChase

Proudly Supports

# New Castle County Chamber of Commerce 104<sup>th</sup> Annual Dinner



Helping to fuel economic growth and enable  
higher standards of living for all.



# Powering over 90% of the Fortune 500

Comcast Business delivers secure networking and advanced cybersecurity, offering unmatched scale, reliability, and support to businesses of all sizes. Providing secure, AI-backed networking extending across more than 100 countries and five continents, with thousands of experts ready to answer your call at 2am like it's 2pm. When you add it all up, no one does business like Comcast Business.

Visit [comcastbusiness.com](https://comcastbusiness.com) to learn more.

**COMCAST  
BUSINESS**



# MAKE YOUR MARK

Congratulations to all of  
the NCCCC honorees.



# NAI Emory Hill

Celebrating 45 Years

## Global Resources. Local Connection.

Your Full-Service Commercial Real Estate Partner  
Serving Delaware and Surrounding Counties of MD, NJ, & PA for 45 Years.

Brokerage | Construction | Property Management | Maintenance | Delaware Lock

An Emory Hill Affiliate

### NAI Emory Hill - New Castle, DE

10 Corporate Circle, Suite 100  
New Castle, DE 19720  
302 322 9500

### NAI Emory Hill - Rehoboth Beach, DE

20245 Bay Vista Road, Suite 205  
Rehoboth Beach, DE 19971  
302 827 4940

[www.naiemoryhill.com](http://www.naiemoryhill.com)

## COMFORT CLASSICS at Aunt Berta's Kitchen

**SOUL FOOD BUFFET**

**\$31.99**



**EVERY SUNDAY 11:30-3:30**

**Children \$11.99 / \$6.99**

Call to host your meetings, events, and parties **302-600-5744**, or register online at [www.auntbertaskitchen.com/catering](http://www.auntbertaskitchen.com/catering) - Complete the inquiry at the bottom of the page. **7288 Lancaster Pike, Hockessin, DE 19707**

*Beautiful Event Space*



# Powering the next leap in electronics

Proud to support the community.

Headquartered in Wilmington, Qnity is a premier technology provider across the semiconductor value chain, empowering AI, high performance computing, and advanced connectivity.

[Qnityelectronics.com](https://qnityelectronics.com)



Bloomenergy<sup>®</sup>

10 YEARS

OF GROWTH IN  
DELAWARE

2013 2023

---

Proud member of the New Castle  
County Chamber of Commerce



Responsible energy solutions to accelerate businesses  
and communities toward a clean, resilient, energy future.

LEARN MORE AT [BloomEnergy.com](https://www.BloomEnergy.com)



CBM Insurance Group is proud to support

# New Castle County Chamber of Commerce

Employee Benefits | Property and  
Casualty | Wealth Management |  
Retirement Planning Services

302-322-2261 | [info@cbmins.com](mailto:info@cbmins.com)



# Empowering leaders in business

in our communities  
around the world.



Learn more at [Corteva.com](https://www.corteva.com)



Your All-in-One Partner for Tomorrow's Supply Chain

Enstructure owns and operates a network of port infrastructure assets across the United States. We are building the future of supply chain operations for the world's largest companies in the energy, automotive, food, agriculture, manufacturing, construction and public safety sectors.

Our full-service, deep-water marine terminals in Delaware and Pennsylvania offer large-scale infrastructure and diverse service capabilities for perishable, bulk, breakbulk, project and containerized cargo.



Let's explore how our network can empower your business and streamline every link in your supply chain.

Eryn Dinyovszky  
President, Enstructure Mid-Atlantic  
302.472.7679



Mike Evanko  
Chief Commercial Officer  
302.472.7679



Let's keep moving  
New Castle County *forward.*



Marcus A. Henry  
County Executive

Connect with NCC:



NCC Website +  
Resources



Subscribe to  
Henry's Highlights



New Castle County Economic Partnership (NCCEP)

# Interested in economic development?

We invite business leaders committed to economic growth in New Castle County to join the NCCEP—a key non-governmental initiative focused on driving development, fostering collaboration, and providing direct access to vital resources and information.



## Mission

Our mission is to stimulate economic growth, unity, and a diverse economic landscape in New Castle County. We achieve this by fostering collaboration, thought leadership, and innovation among area economic development leaders.



## Benefits

Enjoy exclusive benefits like economic and legislative updates, behind-the-scenes business tours, and access to leaders. Share insights, build networks, and stay informed on local trends. Plus, receive discounts on Chamber economic development events like the State of the County and EDx Talks.

**Interested?** Email [odrene@ncccc.com](mailto:odrene@ncccc.com)  
or call 302-294-2058.

[www.ncccc.com](http://www.ncccc.com)



# Always connecting business with community.

We applaud the Chamber's  
commitment to moving  
New Castle County forward.



Never the same™



# Fitzgerald Consulting Means Business.

*Proud supporter of the  
New Castle County  
Chamber of Commerce.*

**Fitzgerald Consulting, Inc.**  
*Government Relations*

fitzgeraldgovrel.com  
(302) 294-2060



an affiliate of  
  
 The Chicago Lighthouse

## Contact Center Solutions

[BSDenterprises.org](http://BSDenterprises.org)

A customizable turnkey approach to get up and running quickly.

A "train the trainer" model to learn your business and exceed service standards.

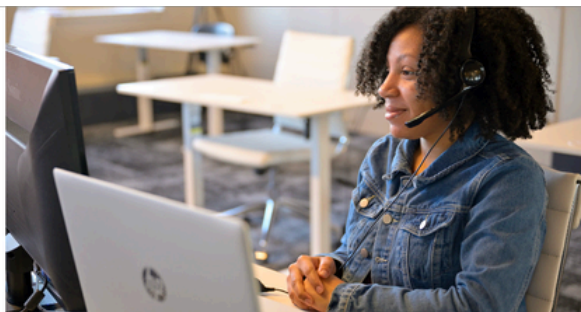
Experienced with Healthcare, Financial Services and State & Government Services.

#### Services we provide:

- General Operator Services for Single Point-of-Contact
- Appointment Scheduling
- Billing Payment Processing
- After-Hours Messaging and Paging Service
- Helpdesk/Website Navigation
- Outbound Calling Campaigns
- Contact Center Overflow
- Internal/External Support Lines
- PCI Compliance
- A.I. Integration

### LET'S GET STARTED!

**Adeem Osman**  
 SVP of Business Development  
 (312) 997-3671  
[adeem.osman@chicagolighthouse.org](mailto:adeem.osman@chicagolighthouse.org)



## A Better Contact Center through Social Enterprise

With over a decade of experience, The Chicago Lighthouse's innovative social enterprise approach to operating Contact Centers **PROVIDES:**

Operational Efficiency	<b>LEADSTO</b>	Increased Revenue
Centralized Services		Expansion Opportunities
A Highly Skilled and Dependable Workforce		Higher Retention Rates

### OUR SUCCESS IN 2024



**ANSWERED**  
 80% of calls within 20 seconds



**ACHIEVED HIGHER RETENTION RATES**  
 than the industry standard among our experienced staff of Veterans and those with disabilities



**HANDLED OVER**  
 4 million calls for a total of 28+ million minutes

### TRUSTED PARTNERS



BSD Enterprises is a trusted, Delaware-based provider of contact center services. We serve hospitals, municipalities, toll system providers and government agencies. We offer employment to people who are blind, visually impaired, disabled and Veterans.

*Blue-chip reporting. Start-up energy.*

# SPOTLIGHT DELAWARE



**SIGN UP FOR OUR NEWSLETTER**

*Always free at  
[spotlightdelaware.org](http://spotlightdelaware.org)*

DELAWARE  
**BUSINESS TIMES**

PROUD TO SUPPORT THE  
COMMUNITY  
WHERE WE LIVE,  
WORK AND PLAY!

302.656.1837

[Advertising@DelawareBusinessTimes.com](mailto:Advertising@DelawareBusinessTimes.com)

[DelawareBusinessTimes.com/Subscribe](http://DelawareBusinessTimes.com/Subscribe)



# Congratulations to this year's winners

Our community of scientists,  
engineers, visionaries and innovators  
thank you for your impact in creating  
a thriving environment in Delaware.



**Why wait for a better future?  
Invent a better now.**

**[dupont.com](https://www.dupont.com)**



DelawareToday®

PROUD TO SUPPORT THE  
COMMUNITY  
WHERE WE LIVE,  
WORK AND PLAY!

302.656.1809

Advertise@DelawareToday.com

Visit [DelawareToday.com/Subscribe](http://DelawareToday.com/Subscribe)



Proud to support the  
New Castle County Chamber of Commerce's  
Annual Dinner

Potter  
Anderson | Celebrating  
200 Years



# DESTEFANO CONTRACTING LLC

OUR DEDICATED TEAM OF  
SKILLED PAINTERS AND  
CONTRACTORS ARE READY TO  
TRANSFORM YOUR NEXT PROJECT  
INTO A STUNNING REALITY!

## OUR SERVICES



### PAINTING

EXTERIOR, INTERIOR, COMMERCIAL



### CARPENTRY

SHIPLAP, BOARD & BATTEN, CUSTOM TRIM



### DRYWALL

BASEMENTS, PATCH WORK, GARAGES



### TILING

KITCHENS, BATHROOMS, ENTRYWAYS



### AND MORE!

LANDSCAPE CLEANUP, PAVER PATIOS,  
BASEMENT RENNOVATIONS



CALL (302) 588-3183 OR VISIT  
DESTEFANOCONTRACTING.COM  
FOR A FREE QUOTE!



# Highmark Delaware is proud to support the New Castle County Chamber of Commerce.

You teach. You encourage. You transform.



[HIGHMARK.COM](http://HIGHMARK.COM)

Highmark Blue Cross Blue Shield Delaware is an independent licensee of the Blue Cross and Blue Shield Association.



We proudly support the  
**New Castle County  
Chamber of Commerce**  
and congratulate all of  
tonight's award recipients.

**SAUL EWING**

LLP

[saul.com](http://saul.com)



**Pamela Scott**  
**Partner**  
Wilmington

# A strong community is built on a solid foundation.

A community is only as brilliant as its most dedicated and responsible neighbors. Thank you, Food Bank of Delaware, The Chemours Company, & Michael J. Hare, for helping New Castle County thrive.



**BRILLIANTLY  
BORING  
SINCE 1865™**

Brilliantly Boring since 1865 is a service mark of The PNC Financial Services Group, Inc.

©2026 The PNC Financial Services Group, Inc. All rights reserved.  
PNC Bank, National Association. **Member FDIC.**



**iHeart**  
Media

# Thank you Sponsors.

## PRESENTING SPONSOR

---



## GOLD SPONSORS

---



## SILVER SPONSORS

---



## BRONZE SPONSORS

---



## CONTRIBUTING SPONSORS

---



# PRESIDENT'S CIRCLE

---



ALOYSIUS  
BUTLER  
& CLARK



Bloomenergy®



BANK OF AMERICA



Chemours™



COMCAST  
ADVERTISING

COMCAST  
BUSINESS



Delaware City  
Refining Company®



Fitzgerald Consulting, Inc.  
Government Relations



JPMORGAN  
CHASE & CO.

M&T Bank



RICHARDS  
LAYTON &  
FINGER

